

# Receiver Hitch Snow Plow

An easy-to-use commercial grade plow,  
perfect for driveways and other tight spaces



 **meyer** | Drive Pro

[www.meyerproducts.com](http://www.meyerproducts.com)

 **meyer**  
a brand of aebi schmidt

# Meyer® Receiver Hitch Snow Plow

## Easy from every angle

Incorporating a simple seven-connection wiring system, the Drive Pro™ plow installs in minutes. What's more, it arrives in a crate fully assembled, saving even more valuable time.



Specifications	Drive Pro 5'	Drive Pro 6'	Drive Pro 6'8"	Drive Pro 7'6"
<b>Blade type</b>	Full trip steel	Full trip steel	Full trip steel	Full trip steel
<b>Moldboard length</b>	152 cm	183 cm	203 cm	229 cm
<b>Moldboard height</b>	57 cm	57 cm	57 cm	57 cm
<b>Moldboard gauge</b>	1,9 mm	1,9 mm	1,9 mm	1,9 mm
<b>Vertical ribs</b>	6	6	6	6
<b>Plow trip springs</b>	2	2	2	2
<b>Cutting edge</b>	0,64 cm x15,24 cm	0,64 cm x15,24 cm	0,95 cm x15,24 cm	0,95 cm x15,24 cm
<b>Avg. width at full angle</b>	138 cm	165 cm	183 cm	206 cm
<b>Angling rams</b>	3,81 cm x 25,40 cm	3,81 cm x 25,40 cm	3,81 cm x 25,40 cm	3,81 cm x 25,40 cm
<b>Weight complete</b>	149 kg	156 kg	168 kg	175 kg

### Easy to Install

- Uses a class-3, 5 cm receiver mount.
- Attach/detach in minutes with the Quick Link™ mounting system.

### Easy to Use

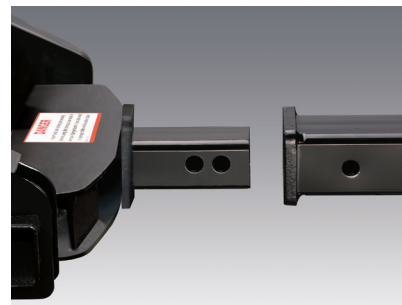
- A pistol grip controller gives in-cab control of the up/down and right/left motion of the blade.
- Integrated caster wheels make it easy to maneuver and store the moldboard.
- Crank stand allows easy adjustment of the plow for no-hassle attach/detach.

### Easy to Save

- Engineered using lightweight military-grade steel.
- Lighter weight means less wear and tear on your vehicle and better fuel efficiency.

### Easy to Trust

- Designed for maximum durability.
- Powered by a commercial-grade hydraulic system.
- Protected from corrosion with Dura-Slick™ paint with Teflon®.



Quick Link™ mounting system for easy on/off.



Easy-to-use pistol grip controller.



Caster wheels for easy maneuverability.



Commercial-grade enclosed hydraulic system provides responsive control.

216-486-1313 / meyerproducts.com

Form # 3-616\_1120PDF

Meyer Products LLC reserves the right, under its continuing product improvement program, to change construction or design details, specifications and prices without notice or without incurring any obligation.

Meyer Snow Plows are protected by one or more of the following patents: 8006413, D0507999 S, D05179635, 8453358, 8695238, 7,918,042 B2, CA 2,677,509 C, D0517963 S, EP 1,989,402 B1, ES 2,346,587, 6138388, 7,591,087 B2, 7,661,211 B2, 7,793,440 B1, 8739437, 8793906, CA 2,604,085C, 6354024, 6276075, 6,318,975 B1, 6564479, 6256909, 6594923, 6618964, 7114270, 7117617, 7290359, D399326 S, CA 2,300,012 C, CA 2,314,772 C, CA 2,331,653 C, CA 2,370,925 C, CA 2,455,637 C, CA 2,653,801 C, CA 2,654,856, EP 1,010,809, 7353628, 6153975, 6273729, CA 2,260,509 C, CA 2,282,045 C, CA 2,293,858 C, CA 2,298,243 C, 6265829, 6015219, 6005300, 6163985, 8,887,413, 9,278,645, 9,346,394, 9,205,788.

 **meyer**  
a brand of aebi schmidt