

WingMan™

An easy-to-use commercial grade plow,
perfect for driveways and other tight spaces



www.meyerproducts.com

 **meyer**
a brand of aebi schmidt

Meyer® WingMan™

Easy from every angle

Incorporating a simple seven-connection wiring system, the WingMan™ plow installs in minutes. What's more, it arrives in a crate fully assembled, saving even more valuable time.

Easy to Install

- Uses a class-3, 2-inch receiver mount.
- Attach/detach in minutes with the Quick Link™ mounting system.

Easy to Use

- A pistol grip controller gives in-cab control of the up/down and right/left motion of the blade.
- Integrated caster wheels make it easy to maneuver and store the moldboard.
- Crank stand allows easy adjustment of the plow for no-hassle attach/detach.

Easy to Save

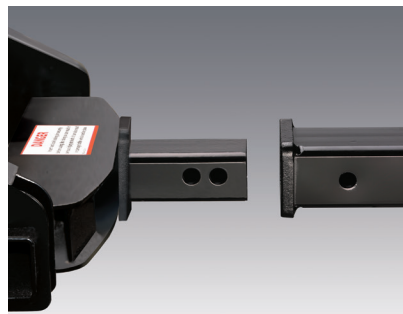
- Engineered using lightweight military-grade steel.
- Lighter weight means less wear and tear on your vehicle and better fuel efficiency.

Easy to Trust

- Designed for maximum durability.
- Powered by a commercial-grade hydraulic system.
- Protected from corrosion with Dura-Slick™ paint with Teflon®.



Specifications	WingMan 6'8"	WingMan 7'6"
Blade type	Full trip steel	Full trip steel
Moldboard length	6'8"	7'6"
Moldboard height	22"	26"
Moldboard gauge	14	14
Vertical ribs	8	8
Plow trip springs	2	2
Cutting edge	3/8" x 6"	3/8" x 6"
Avg. width at full angle	72"	80"
Angling rams	1-1/2" x 10" (2)	1-1/2" x 10" (2)
Weight complete	371 lbs	400 lbs



Quick Link™ mounting system for easy on/off.



Easy-to-use pistol grip controller.



Caster wheels for easy maneuverability.



Top-of-the-line Nite Saber® III lights improve night vision. Commercial-grade encased hydraulic system provides responsive control.

216-486-1313 / meyerproducts.com

Form # 3-598R2_1120PDF

Meyer Products LLC reserves the right, under its continuing product improvement program, to change construction or design details, specifications and prices without notice or without incurring any obligation.

Meyer Snow Plows are protected by one or more of the following patents: 8006413, D0507999 S, D05179635, 8453358, 8695238, 7,918,042 B2, CA 2,677,509 C, D0517963 S, EP 1,989,402 B1, ES 2,346,587, 6138388, 7,591,087 B2, 7,661,211 B2, 7,793,440 B1, 8739437, 8793906, CA 2,604,085C, 6354024, 6276075, 6,318,975 B1, 6564479, 6256909, 6594923, 6618964, 7114270, 7117617, 7290359, D399326 S, CA 2,300,012 C, CA 2,314,772 C, CA 2,331,653 C, CA 2,370,925 C, CA 2,455,637 C, CA 2,653,801 C, CA 2,654,856, EP 1,010,809, 7353628, 6153975, 6273729, CA 2,260,509 C, CA 2,282,045 C, CA 2,293,858 C, CA 2,298,243 C, 6265829, 6015219, 6005300, 6163985, 8,887,413, 9,278,645, 9,346,394, 9,205,788.

 **meyer**
a brand of aeibi schmidt