

Installation Instructions

Standard Operating System Conversion Kit 08098

⚠ CAUTION GENERAL INFORMATION

Always disconnect battery prior to installation.

SAFETY PRECAUTIONS should be used when Quik Lift® is in a RAISED position.

LOWER plow to the ground when vehicle is PARKED.

OVERHAUL and SERVICE information is covered on separate instructions.

Note:

1. Connect ground cable to negative side of battery for a solid connection to ground.
2. **⚠ CAUTION** Route all cables away from moving engine parts, Manifolds, and sharp sheet metal.
3. For weather protection, coat all connections with Meyer Dielectric Grease Part No. 15632
4. The vehicle must be equipped with a "Heavy Duty Battery" (70 Amp, Hr. Min.), 550 C.C.A. and "Alternator" (60 Amp. Min.) to obtain maximum performance.
5. Follow these instructions explicitly. Warranty does not apply to a Meyer product which has been negligently or improperly assembled or installed.

NOTICE: Meyer Products LLC reserves the right, under its continuing product improvement program, to change construction, design, details, specifications, and prices without notice or without incurring any obligation. Meyer Products LLC assumes no responsibility for installations not made in accordance with these instructions.

Parts List

Item	Part #	QTY	Description
	08098	1	New SOS Conversion Kit
1	15066	1	• Clamp
2	15220	1	• E73 Motor Solenoid Kit
3	23025	1	• Standard OP Sys Power Harness
4	23039	1	• DLX Plow Harness SOS
5	23046	1	• New SOS Motor Cable
6	23047	1	• DLX SOS Controller STRT Blade
7	23048	1	• New SOS To Deutsch Conn.
8	23057	1	• 7 Pin RND 4 Pin Flat T-Conn.
9	23059	1	• SOS HFP Vehicle Harness

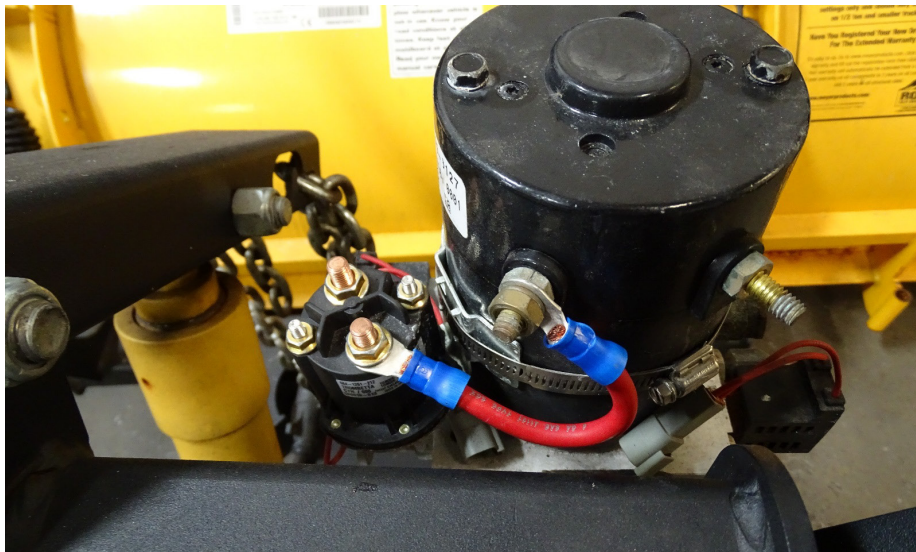
Step 1: Remove the plus wiring from the hydraulic unit.



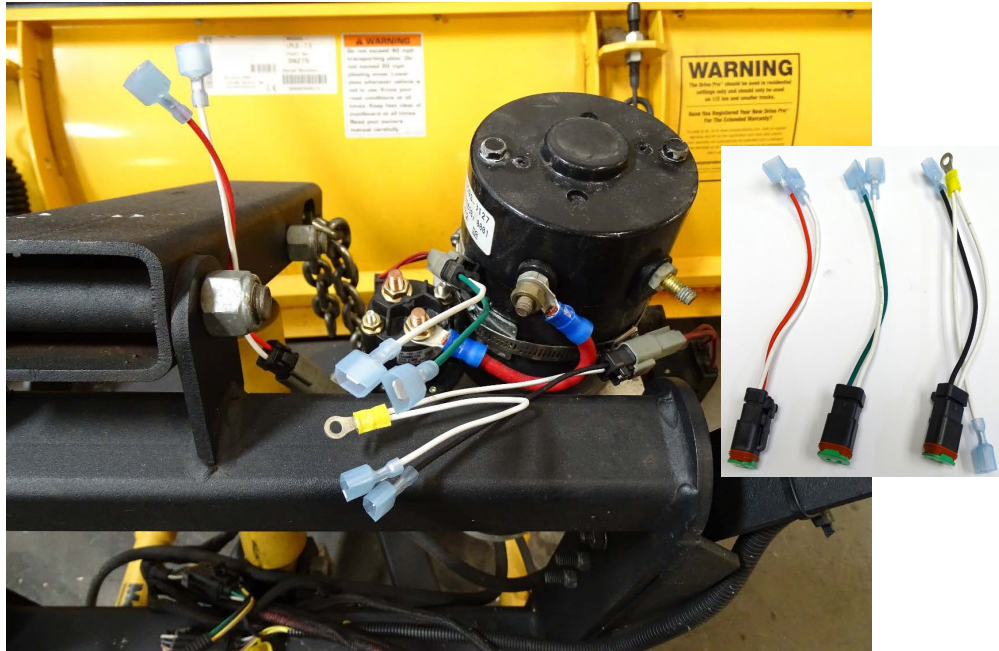
Step 2: Clamp on Motor Solenoid (2) using Clamp (1) to the hydraulic unit.



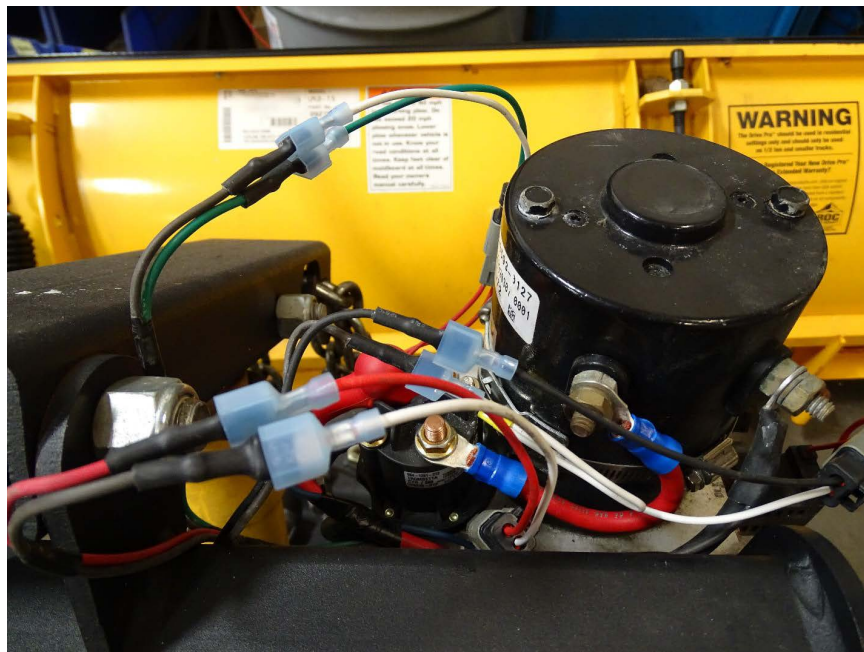
Step 3: Attach SOS Motor Cable (5) from the Motor Solenoid (2) to the hydraulic unit motor as shown.



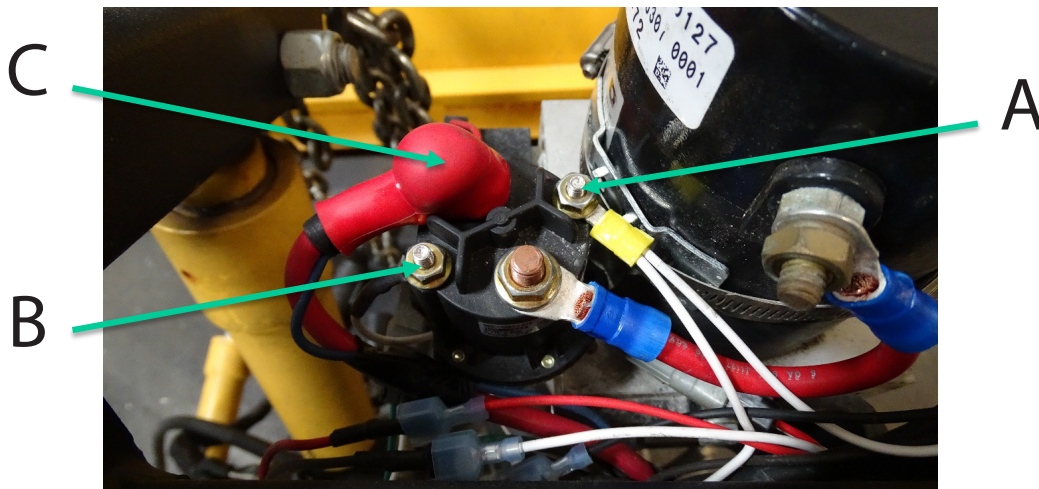
Step 4: Connect the three coil adapters (7) (red, green and black) to their respective coils.



Step 5: Connect the three coil adapters (7) (red, green and black) to the Harness (4) (brown to white, red to red, black to black and green to green). Connect the heavy black wire to the motor ground as shown (A). If motor does not have a ground lug connect heavy black wire to the Hydraulic Block.



Step 6: Connect White wire loop to the small terminal nearest the hydraulic motor (A), the brown wire loop to the small terminal farthest from the hydraulic motor (B). Connect the heavy red wire to the large terminal of the motor solenoid (C).



Step 7: Carefully route the wires so the hydraulic unit cover can be installed.

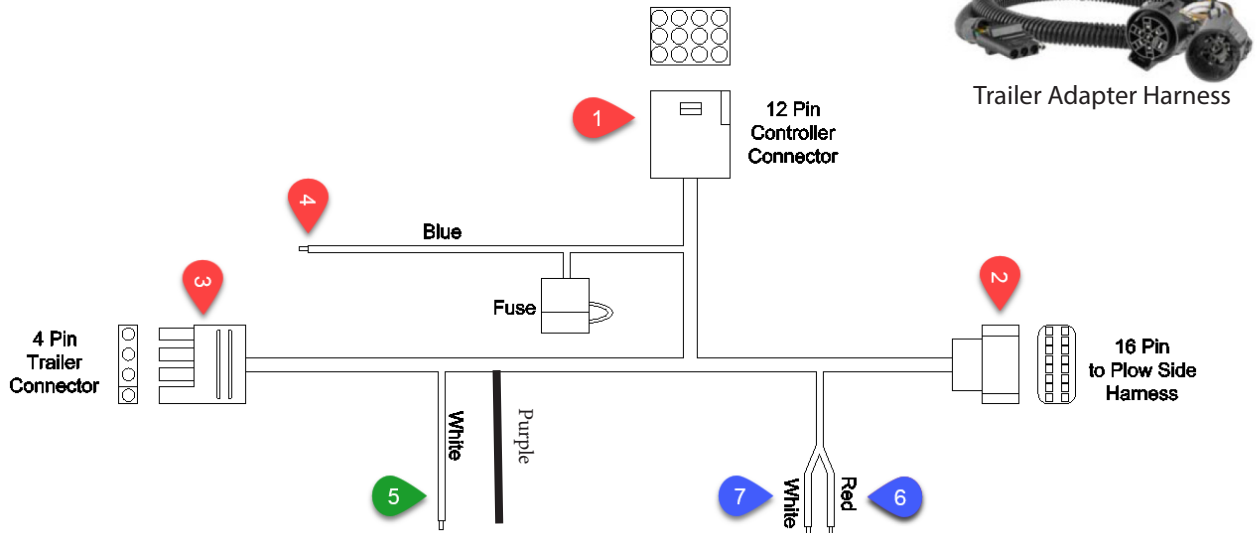


Step 8: To install the SOS vehicle harness (9) route the 12 pin connector (1) into vehicle's cab and plug into controller. Route the 16 pin connector (2) to the front of the vehicle and plug into the plow side harness. Route the 4 pin connector (4) to rear of vehicle and plug into vehicle's trailer harness using the trailer adapter harness (8) (50). Use cable ties to ensure the harness is secured to the vehicle's frame. The WHITE wire (5) will connect to 2015 & Later GM vehicles with alternator relay. See Meyer Products Service Bulletin SB252. The PURPLE wire will connect to the 2015 & Later Ram vehicle snow plow lighting enable wire under the fuse panel.

The following two steps are optional and may be enforced by local law which requires your vehicle lights to be off while your plow lights are on and vice versa...

6) Connect the RED (6) to the HIGH beam function.

7) Connect the WHITE (7) to the LOW beam function.



Step 9: Carefully route the SOS Power Harness (3) wires through the vehicle's grille. Connect the terminals to the vehicle's battery. Red to Positive and Black to Negative..

